



# 2

## Making Basic Maps in QGIS

### Quick Links To Sections

---

- [2.1 Getting To Know QGIS](#)
  - [2.2 Try It Out! Create Your First Map...](#)
    - [2.2.1 Add a Basemap Layer](#)
    - [2.2.2 Add in an Interesting Layer via Shapefiles](#)
    - [2.2.3 Exporting & Sharing Your Map](#)
- 
- 

### Objectives:

1. Familiarize yourself with the layout, toolbars, and buttons in QGIS.
2. Make your first map!



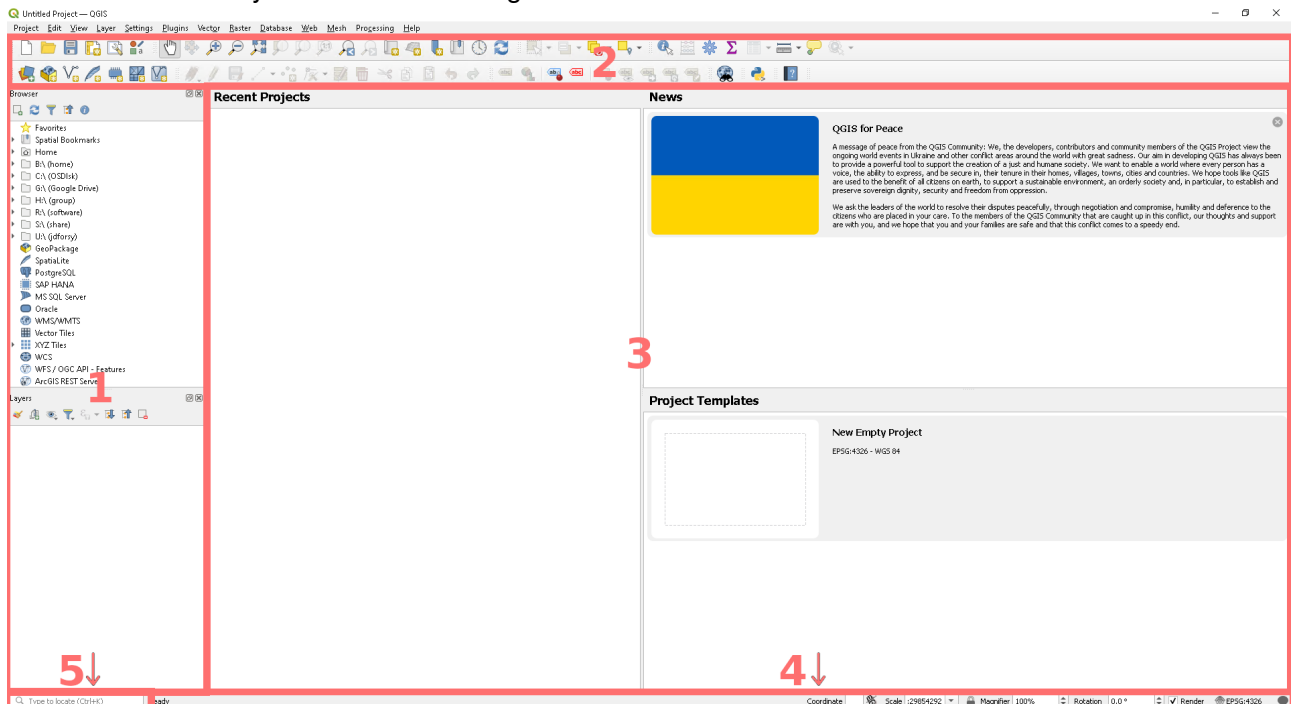
# QGIS

## 2.1 GETTING TO KNOW QGIS

First, you are going to familiarize yourself with QGIS, the software you downloaded in the previous tutorial: On Windows, open QGIS Desktop from the start menu or desktop icon.

On Mac, open QGIS by selecting it in Launchpad or use Go → Applications and double-click on QGIS.

Your screen will likely resemble something like this:



### 1. Browser Panel & Layers List

- The browser panel lets you easily navigate files and databases. We will use it to import map layers and satellite data.
- In the layers list, you will see all the map layers we have imported for the given project we are working on. Layer examples include a base map (e.g., a Google map), satellite **raster** data (e.g., pixels of temperature data from ECOSTRESS), and **vector** data (e.g., points, lines, or shapes indicating points of interest, roads or buildings).



## 2. Toolbars

- The common tools can be found in the toolbars. For example, the \*Project\* toolbar allows you to save, load, print, and start a new project.

## 3. Main Work Area / Map Canvas

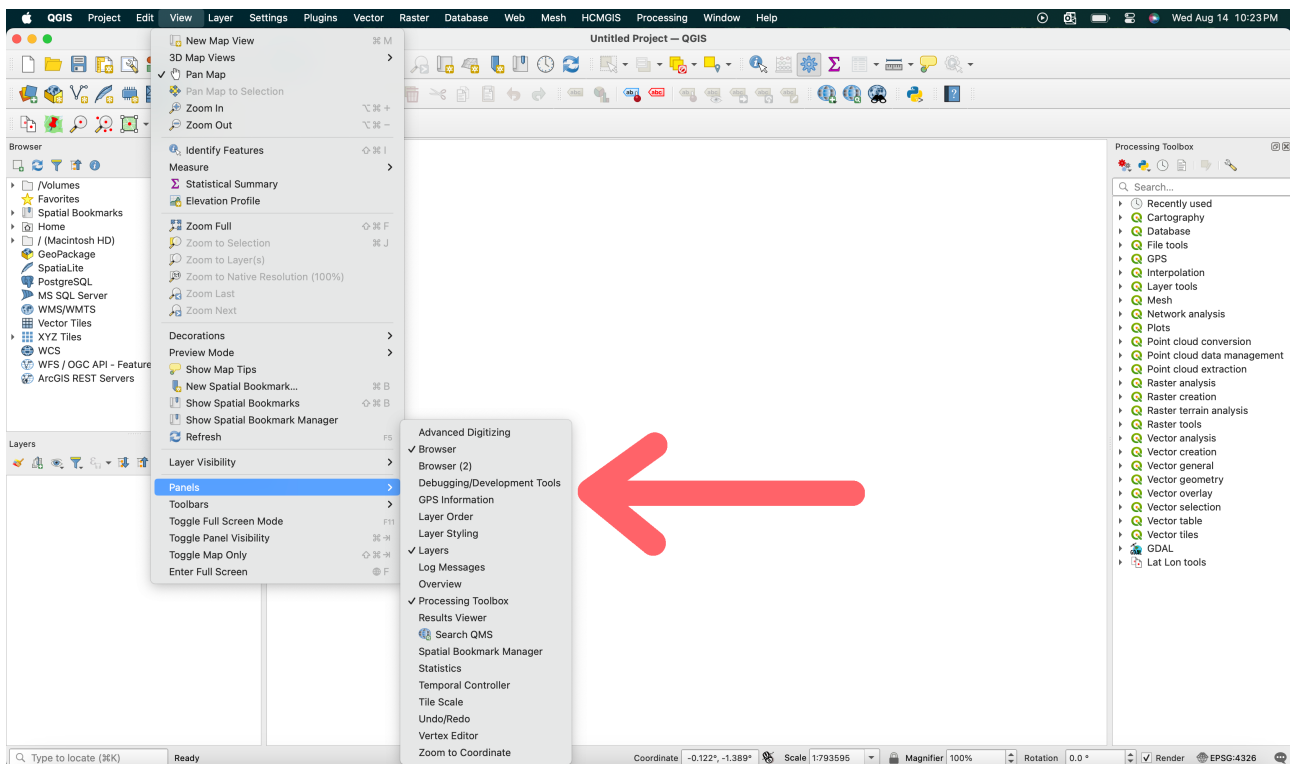
- The main work area is where the map itself is displayed. In the map canvas, you can interact with the visible layers: zoom in/out, move the map, select features, and complete many other operations.

## 4. Status Bar

- The status bar shows you information about the current map. Also allows you to adjust the map scale, the map rotation, and see the mouse cursor's coordinates on the map.

## 5. Locator Bar

- The locator bar allows you to quickly access almost all of the objects and functions of QGIS (e.g., layers, layer features, algorithms, spatial bookmarks, etc.) by typing in the search bar.

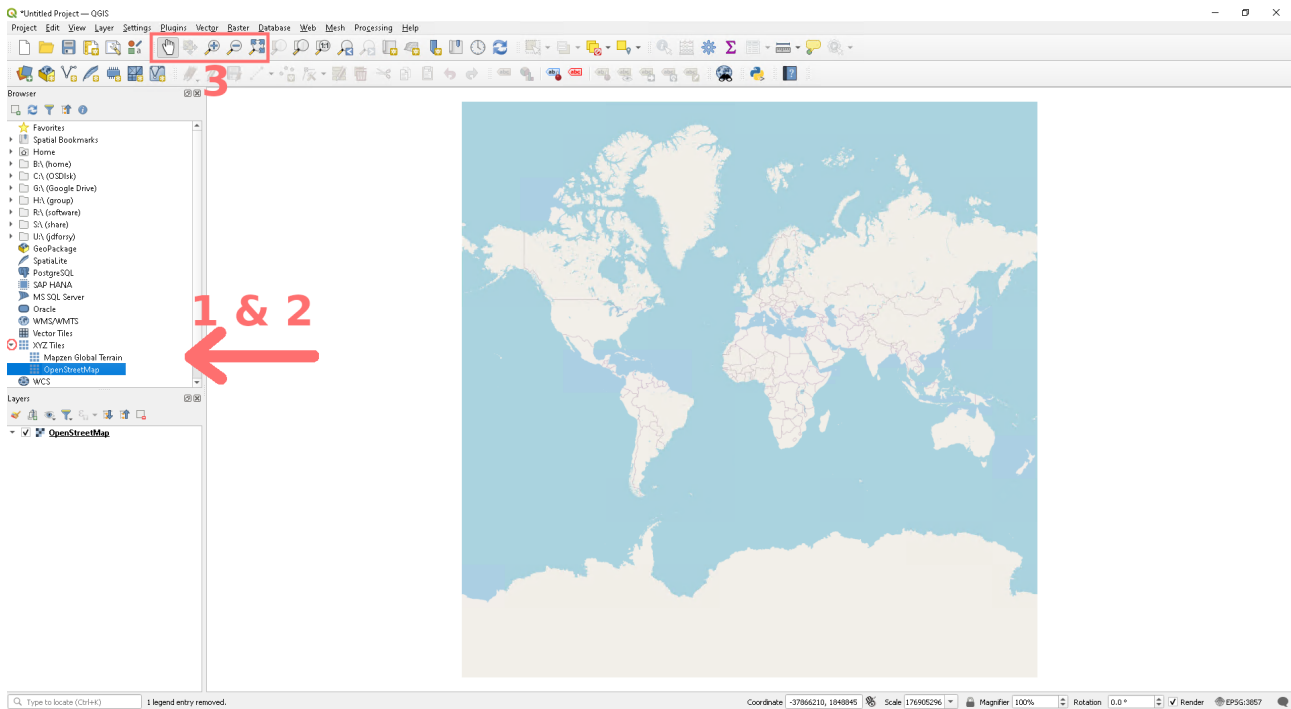


It is easy to accidentally close one of the panels (small windows within QGIS such as the Browser Panel or Layers List). To get them back, click *View* → *Panels* and then select the panels you accidentally closed.



## 2.2 TRY IT OUT! CREATE YOUR FIRST MAP...

### 2.2.1 Add a Basemap Layer

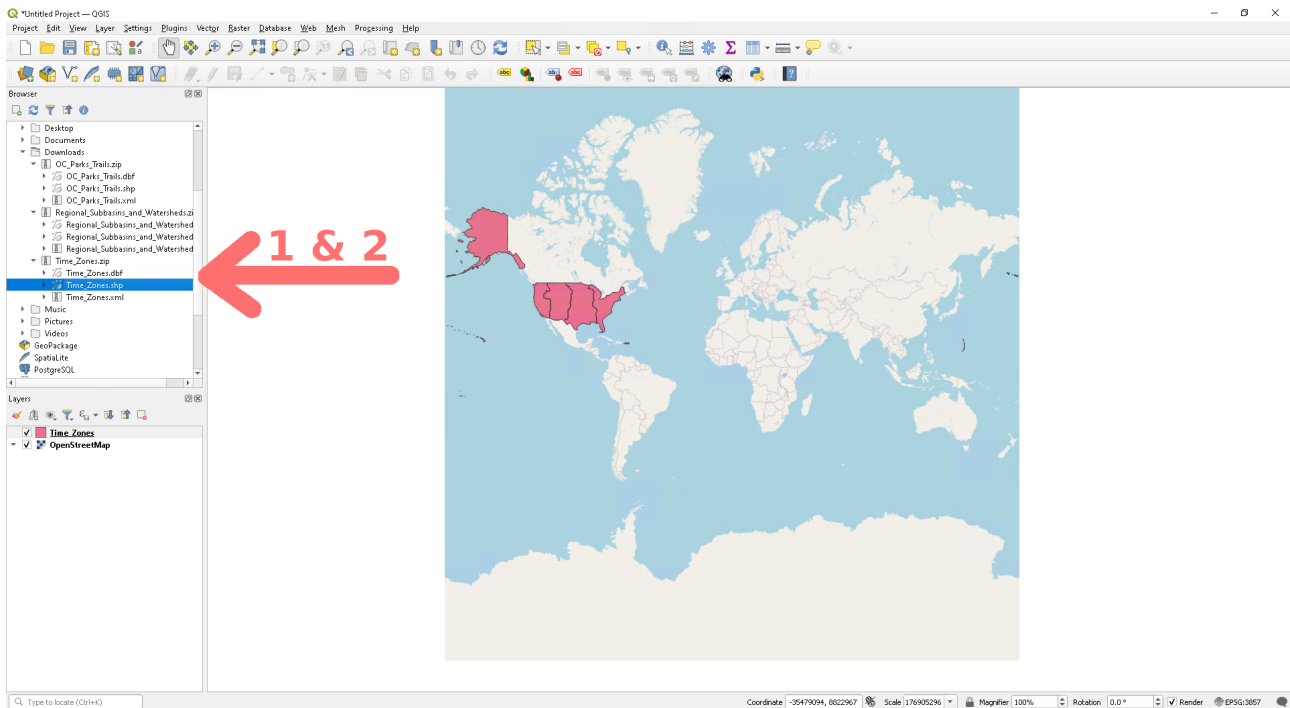


1. In the browser window, expand your options by clicking on the small arrow next to *XYZ Tiles*.
2. Double-click on *Open Street Map* to load a basic open source map. You will notice that we just added a layer to the layer window below.
3. You can zoom in and out with the magnifying glass icons in the toolbar. The little hand icon is the pan map function, which allows you to move the map around when you are zoomed in. Try finding your home or a favorite place in the world. To reset to the default view, you can use the magnifying glass icon with the arrows in all directions.

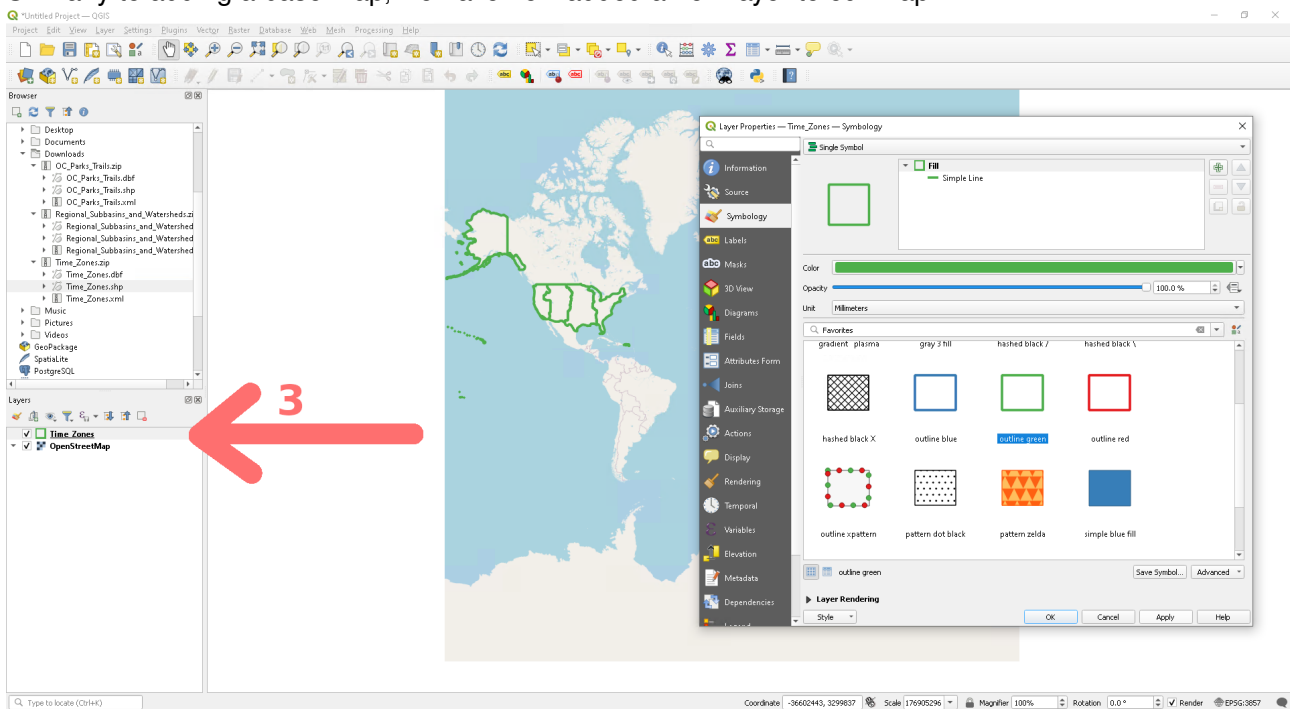
### 2.2.2 Add in an Interesting Layer via Shapefiles

**Shapefiles** are a common geospatial file type that stores locations, points, lines, and shapes.

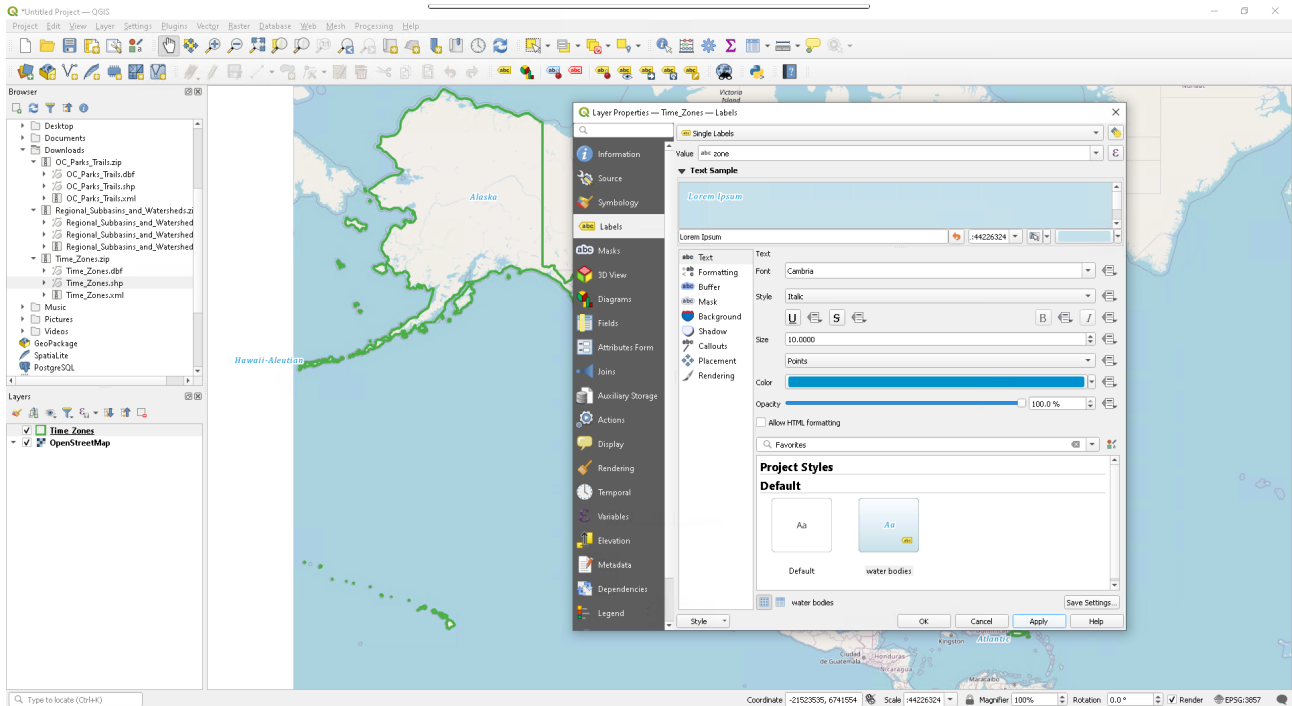
1. Download this zipped folder from our website to your local computer: [US Timezones](#). Make sure to save it to a dedicated project folder.



2. After downloading the file, use the browser window to locate *Time\_Zones.zip* in the folder in which you saved it. Use the little arrow to expand the zip file and double-click on the *Time\_Zones.shp* shapefile. Similarly to adding a base map, we have now added a new layer to our map.

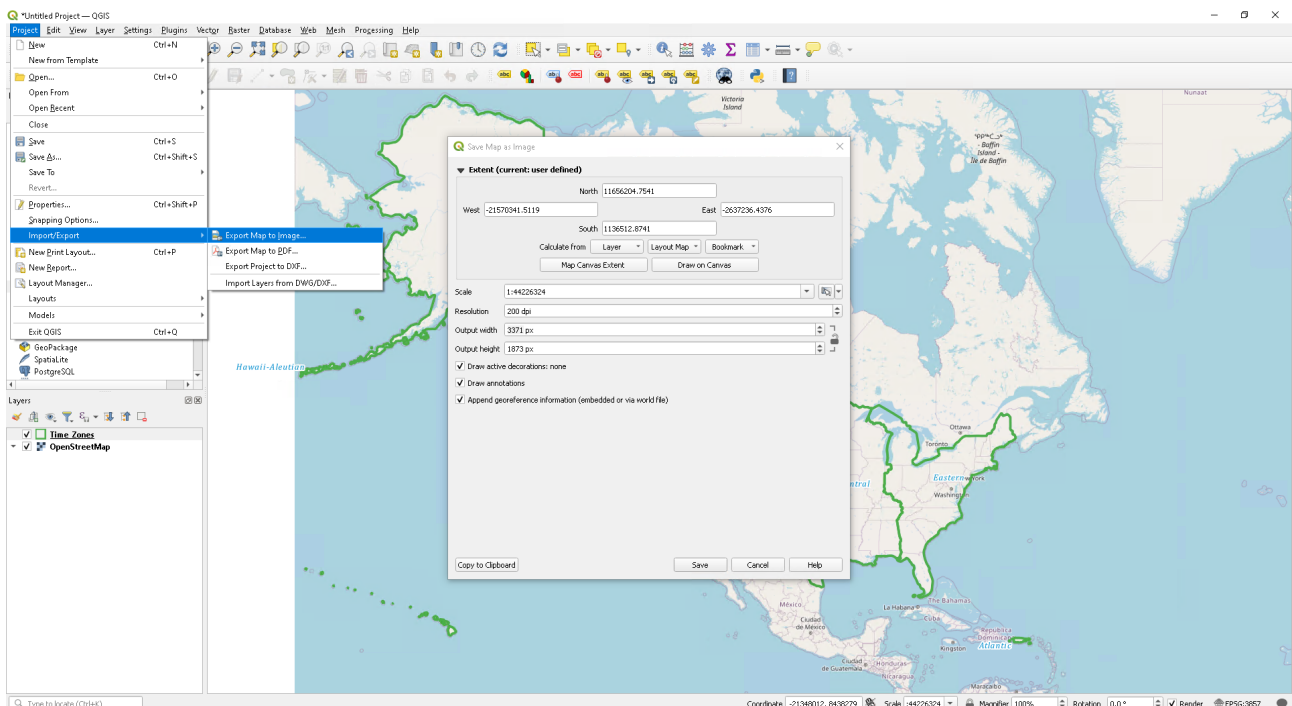


3. This looks a little clunky, so let's make it more readable and useful. Right-click on Windows/Linux, or control-click (hold the control key while clicking; 2-finger click on the touchpad; or click the right mouse button) on Mac, to open up the properties window. Navigate to the symbology window and select the green outline. Click *Apply* and *OK*. Then zoom and pan the map to center on North America, given that these are only US Timezones.



4. Next let's add labels. Re-open the properties window for Time Zones (i.e., right-click) and navigate to the *Labels* window. From the drop-down menu at the top select *Single Labels*. Play around with the options to adjust the colors to your preferences, or maybe use one of the included styles (e.g., *water bodies*). Click *Apply* and *OK*.

## 2.2.3 Exporting & Sharing Your Map





5. Lastly, we want to save your map so you can marvel at your work anytime you would like and share it with friends at parties. QGIS is known to crash sometimes, so saving your projects early and often is very important. From the *Project* menu, navigate to *Import/Export* and select *Export Map To Image*. By default, it will use the [extent](#) that you have in the viewer. I recommend increasing the resolution to 200 DPI. Submit this map to Canvas and save it somewhere in your dedicated project folder. High-five! You have made a map.

---

**Recommended Citation:** Forsythe, J.D., G.R. Goldsmith, and J.B. Fisher. 2023. Observing Earth from Above Tutorials. Chapman University. <https://jeremyforsythe.github.io/icecream-tutorials/>

This work is supported by funding from NASA ECOSTRESS Mission Grant #80NSSC23K0309 (I.C.E. C.R.E.A.M.: Integrating Communication of ECOSTRESS Into Community Research, Education, Applications, and Media) and is openly licensed via [CC BY-NC](#).